

# Road Closure Notice

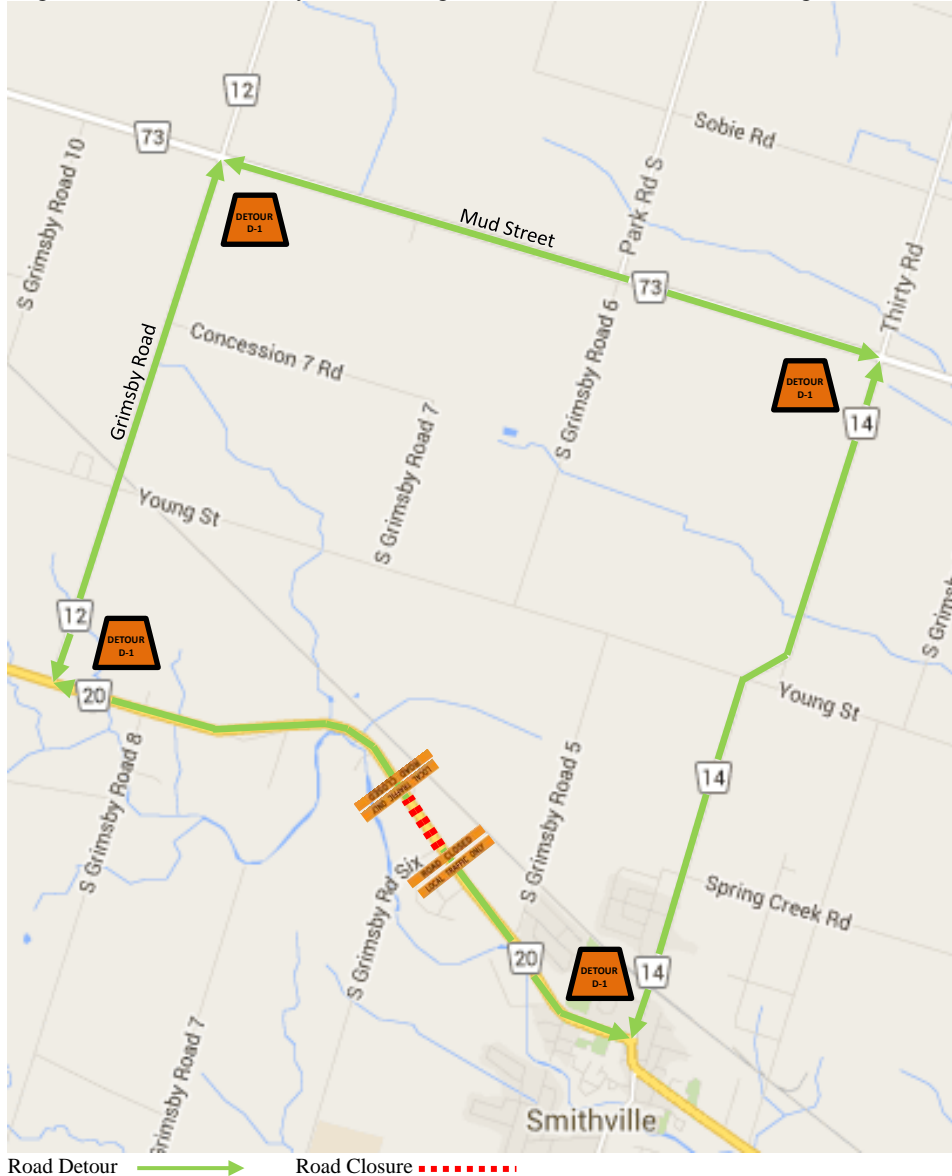
## Full Closure of Regional Road 20 @ South Grimsby Road 6 September 14<sup>th</sup> to September 16<sup>th</sup> from 10am – 2pm

Please be advised that Regional Road 20 will be closed to through-traffic at South Grimsby Road 6 **from September 14<sup>th</sup> to September 16<sup>th</sup>, 2016** for the construction of the transmission line for the Niagara Region Wind Project. Local access will be available for residents.

Please use alternate routes during this phase of construction.

The detour for this road closure is:

Regional Road 12 (Grimsby Road) – Regional Road 73 (Mud Street) – Regional Road 14 (Thirty Road)



Please note, that public services (i.e. mail delivery, garbage pick-up, school buses, etc.) may be disrupted. Any inquiries concerning this closure may be directed to, Shiloh Berriman at 289-683-2563 or [shiloh.berriman@enercon.de](mailto:shiloh.berriman@enercon.de). Construction activities subject to change. Up to date closure information can be found at [www.nrwf.ca](http://www.nrwf.ca). We apologize for any inconvenience this may cause and thank you for your continued patience during this time.