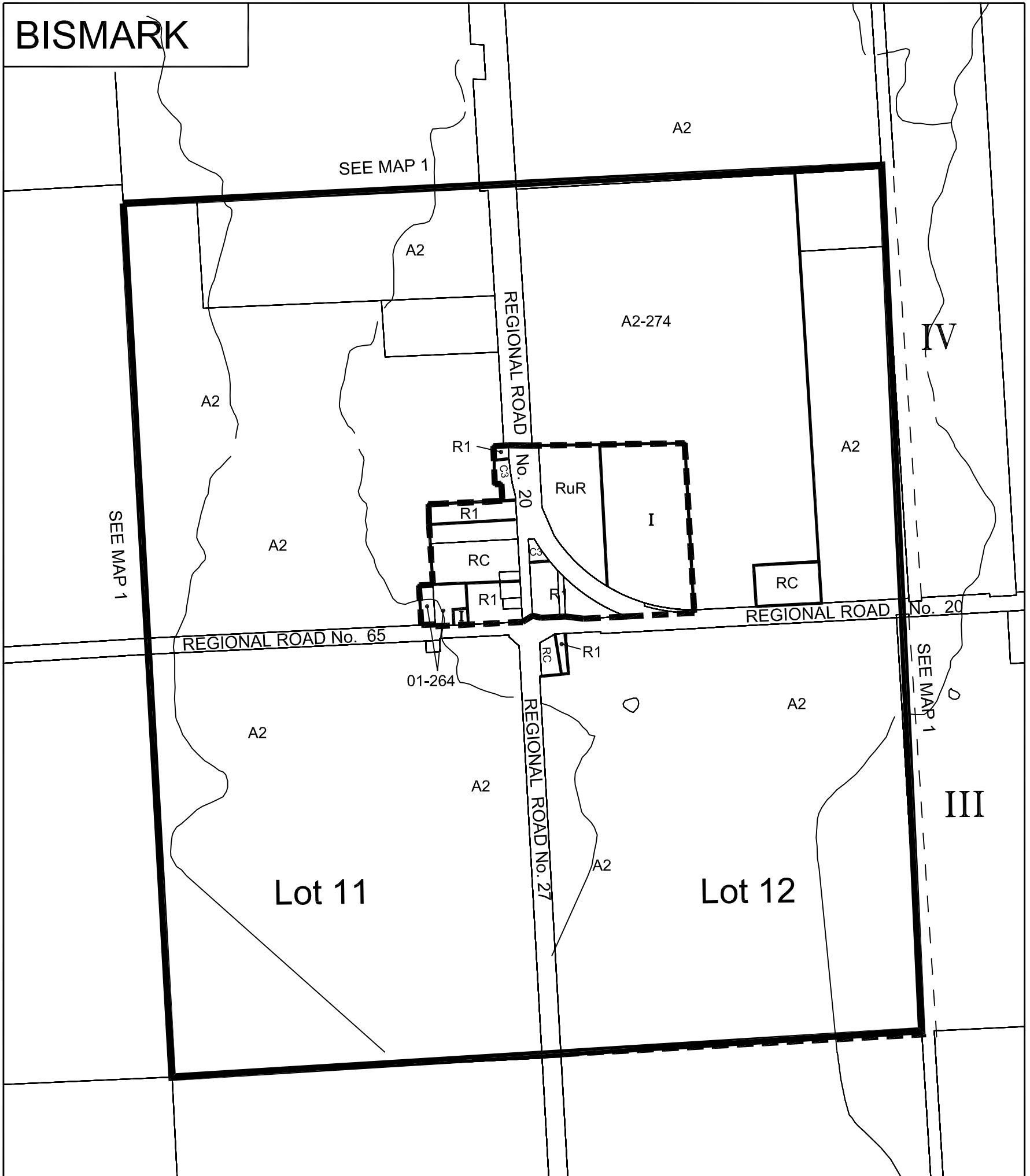


# BISMARK



## TOWNSHIP OF WEST LINCOLN

THIS IS MAP 4  
 TO SCHEDULE "A", BY-LAW No. 79-14  
 PASSED THIS 5th DAY OF MARCH 1979.

'C.O. HODGKINS' MAYOR  
 'J.G. KILLINS' CLERK

### OFFICE CONSOLIDATION

This is an Office Consolidation of Zoning By-law No. 79-14 of the Township of West Lincoln as passed by Council on March 5, 1979.

For accurate reference, recourse should be made to the original Zoning By-law No. 79-14 and amending By-laws.

Consolidated Version November 2009

### ZONES

RESTRICTED AGRICULTURAL  
 AGRICULTURAL  
 RESIDENTIAL  
 RESIDENTIAL  
 RESIDENTIAL MULTIPLE  
 RESIDENTIAL MULTIPLE  
 RURAL RESIDENTIAL  
 DEVELOPMENT  
 TRAILER CAMP  
 SCHEDULE BOUNDARY

### SYMBOLS

A1  
 A2  
 R1  
 R2  
 RM1  
 RM2  
 RuR  
 D  
 T2

### ZONES

LOCAL COMMERCIAL  
 GENERAL COMMERCIAL  
 HIGHWAY COMMERCIAL  
 RURAL COMMERCIAL  
 INDUSTRIAL  
 PUBLIC INDUSTRIAL  
 INSTITUTIONAL  
 PUBLIC  
 OPEN SPACE  
 HAZARD

### SYMBOLS

C1  
 C2  
 C3  
 RC  
 M1  
 M2  
 I  
 P  
 O1  
 H

RURAL CLUSTER BOUNDARY (By-Law No. 2008-29)



FOR INFORMATION PURPOSES ONLY.  
 MAY NOT BE TO SCALE.