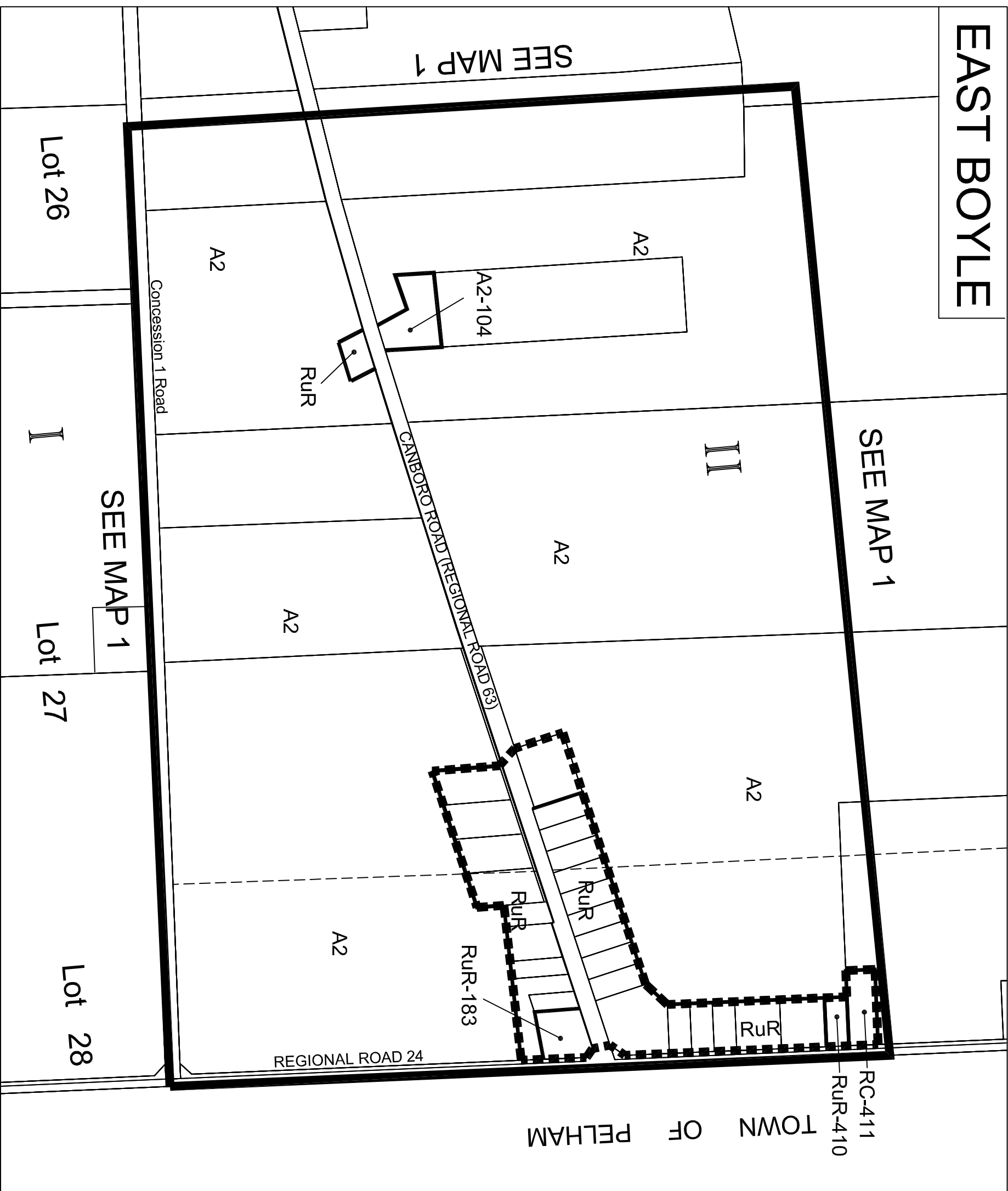


EAST BOYLE



TOWNSHIP OF WEST LINCOLN

THIS IS MAP 15
 TO SCHEDULE "A",
 BY-LAW No. 79-14
 PASSED THIS 5th DAY
 OF MARCH 1979.

'C.O. HODGKINS' MAYOR
 'J.G. KILLINS' CLERK

ZONES	SYMBOLS
RESTRICTED AGRICULTURAL	A1
AGRICULTURAL	A2
RESIDENTIAL	R1
RESIDENTIAL	R2
RESIDENTIAL MULTIPLE	RM1
RESIDENTIAL MULTIPLE	RM2
RURAL RESIDENTIAL	RuR
DEVELOPMENT	D
TRAILER CAMP	T2
LOCAL COMMERCIAL	C1
GENERAL COMMERCIAL	C2
HIGHWAY COMMERCIAL	C3
RURAL COMMERCIAL	RC
INDUSTRIAL	M1
PUBLIC INDUSTRIAL	M2
INSTITUTIONAL	I
PUBLIC	P
OPEN SPACE	O1
HAZARD	H
SCHEDULE BOUNDARY	---
RURAL CLUSTER BOUNDARY (By-Law No. 2008-29)	▬▬▬



FOR INFORMATION PURPOSES ONLY.
 MAY NOT BE TO SCALE.

OFFICE CONSOLIDATION

This is an Office Consolidation of Zoning By-Law No. 79-14 of the Township of West Lincoln as passed by Council on March 5, 1979.

For accurate reference, recourse should be made to the original Zoning By-Law No. 79-14 and amending By-Laws.

Consolidated Version
 December 2008