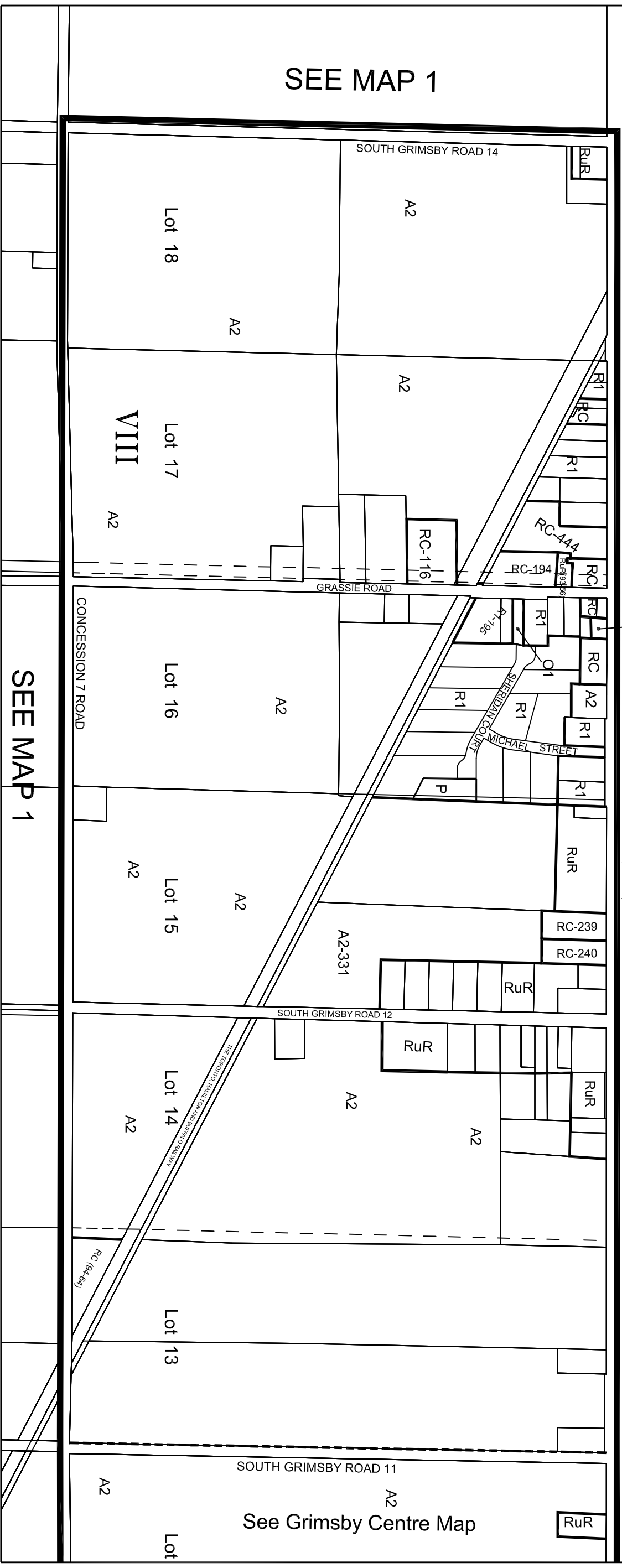


# GRASSIE

# TOWN OF GRIMSBY

R1-315 REGIONAL ROAD No. 73 (Mud Street)



SEE MAP 1

SEE MAP 1

See Grimsby Centre Map

### OFFICE CONSOLIDATION

This is an Office Consolidation of Zoning By-law No. 79-14 of the Township of West Lincoln as passed by Council on March 5, 1979. For accurate reference, recourse should be made to the original Zoning By-law No. 79-14 and amending By-laws.

Consolidated Version  
November 2009

## TOWNSHIP OF WEST LINCOLN

THIS IS MAP 12  
TO SCHEDULE "A",  
BY-LAW NO. 79-14  
PASSED THIS 5th DAY  
OF MARCH 1979.

'C.O. HODGKINS' MAYOR  
'J.G. KILLINS' CLERK

ZONES	SYMBOLS	ZONES	SYMBOLS
RESTRICTED AGRICULTURAL	A1	LOCAL COMMERCIAL	C1
AGRICULTURAL	A2	GENERAL COMMERCIAL	C2
RESIDENTIAL	R1	HIGHWAY COMMERCIAL	C3
RESIDENTIAL	R2	RURAL COMMERCIAL	RC
RESIDENTIAL MULTIPLE	RM1	INDUSTRIAL	M1
RURAL RESIDENTIAL MULTIPLE	RM2	PUBLIC INDUSTRIAL	M2
RURAL RESIDENTIAL	RuR	INSTITUTIONAL	I
DEVELOPMENT	D	PUBLIC	P
TRAILER CAMP	T2	OPEN SPACE	O1
SCHEDULE BOUNDARY	—	HAZARD	H

FOR INFORMATION PURPOSES ONLY.  
MAY NOT BE TO SCALE.

